

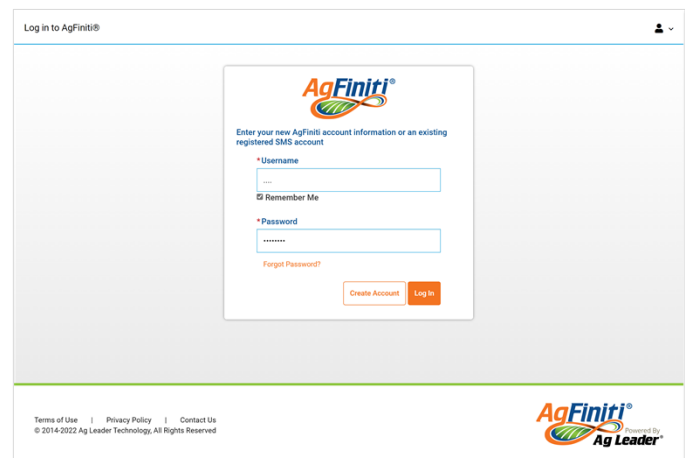
# Connecting AgFiniti® and SMS™ with FieldView

Connect all your machines, displays and devices with full farm connectivity tools from Ag Leader. AgFiniti connects the operation putting real-time and historical information right at your fingertips whether in the cab, office, or anywhere in between. Paired with SMS Software which can read many precision ag display file types across your operation, all your data can be combined for further analysis and decision-making.

An AgFiniti Essentials license, or an SMS Basic/Advanced license current on the yearly maintenance program, is required to enable this functionality. Licenses can be purchased online at [www.agfiniti.com](http://www.agfiniti.com), by contacting your local Ag Leader dealer, or by contacting Ag Leader.

## Step 1

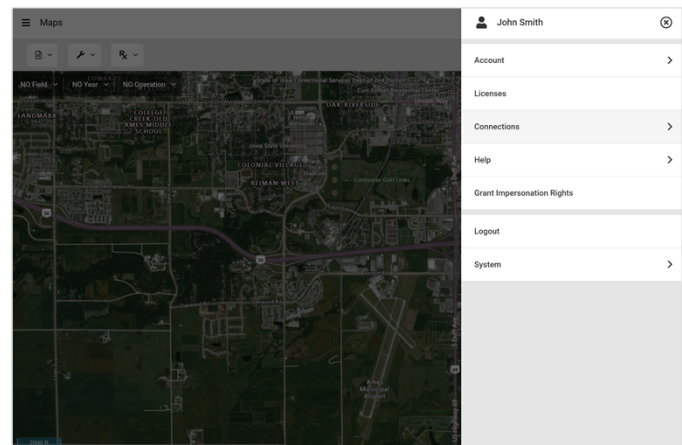
Visit [www.agfiniti.com](http://www.agfiniti.com) and login using your Ag Leader credentials.



The screenshot shows the AgFiniti login interface. At the top, it says "Log in to AgFiniti®". The main content area features the AgFiniti logo and a prompt: "Enter your new AgFiniti account information or an existing registered SMS account". Below this are two input fields: "\* Username" and "\* Password". There is a "Remember Me" checkbox between the fields. A "Forgot Password?" link is located below the password field. At the bottom of the form are two buttons: "Create Account" and "Log In". The footer contains links for "Terms of Use", "Privacy Policy", and "Contact Us", along with the copyright notice "© 2014-2022 Ag Leader Technology. All Rights Reserved" and the AgFiniti logo with "Powered By Ag Leader" text.

## Step 2

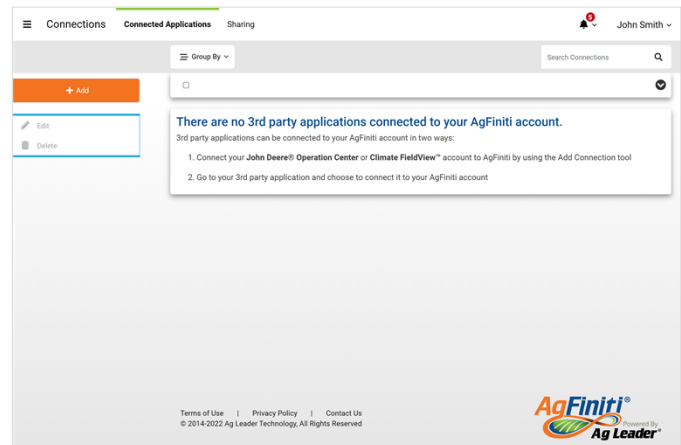
Go to the **User Menu** and select **Connections - Connected Applications**



## Step 3

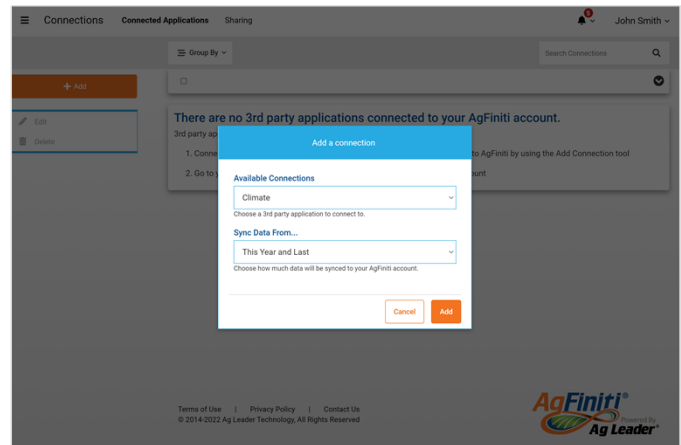
Select the **Add** button

*Customers decide if/when to enable information sharing with their preferred partners and are in full control of the connectivity between AgFiniti and FieldView.*



## Step 4

Select **Climate** and **choose the range of years of data** that you want to sync down from FieldView into AgFiniti.



## Step 5

**Login** with your Climate FieldView account and select the **Allow** button for accessing information.



## You're Connected!

You're connected! Check out our YouTube channel to learn more about [AgFiniti](#) and [SMS](#) or visit our knowledgebase at [support.agleader.com](http://support.agleader.com).

For questions, contact your local Ag Leader dealer or email [support@agleader.com](mailto:support@agleader.com).

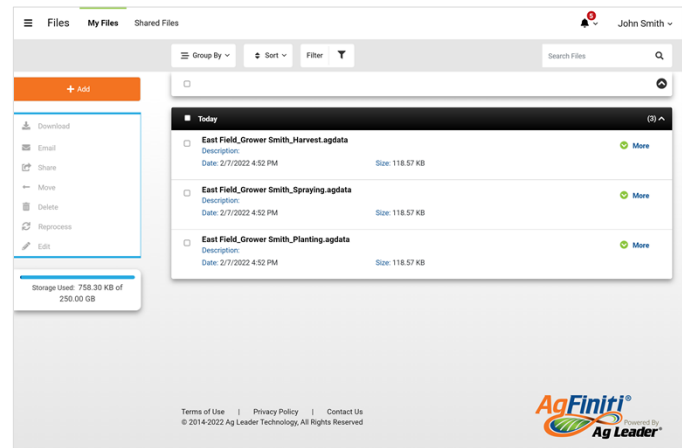
## Getting Started with AgFiniti

### Sharing Files

Go to **User Menu – My Files** to see your files that have been automatically synced to AgFiniti.

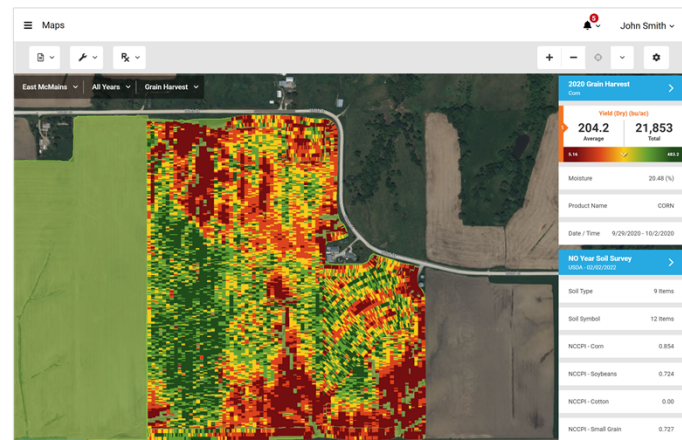
From here, you can share or email files with Trusted Advisors or your customers.

*\*Note – It may take up to 1 day for FieldView to send data to AgFiniti.*



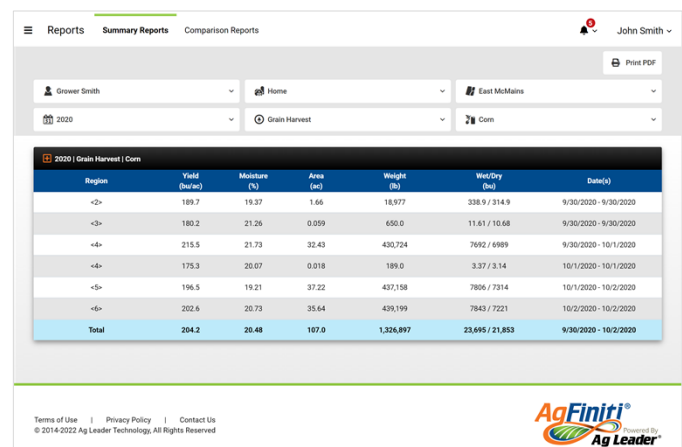
### View Maps

Go to **User Menu - Maps** to see maps of your operation.



### View Reports

Go to **User Menu - Reports** to see reports and analytics for your operation.

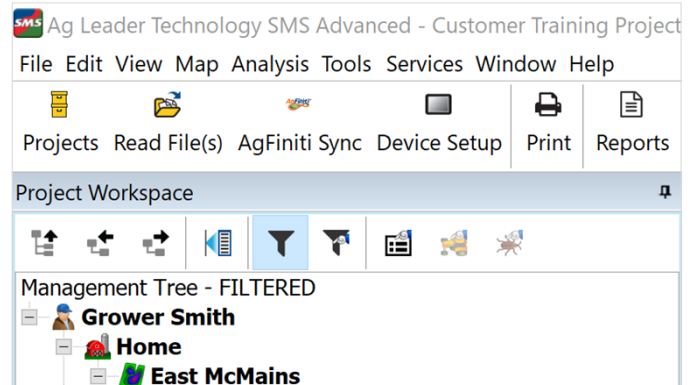


# Getting Started with SMS

## Sync Data with SMS

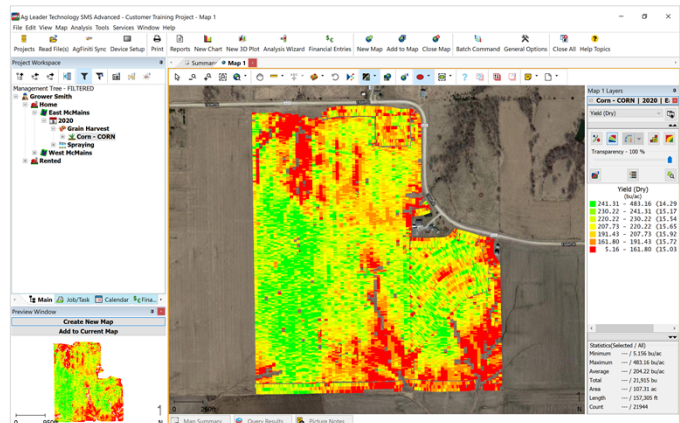
New files will automatically sync from FieldView to your My Files page in AgFiniti. You can use the **AgFiniti Sync** tool in the main menu to choose which **Growers** and **Years** to sync into your SMS Project.

*\*Note – It may take up to 1 day for FieldView to send data to AgFiniti.*



## View Maps

To create a map, select the appropriate data in the management tree and select **Create New Map**.



## View Reports

To create a report, select the **Reports** tool in the main menu and choose the appropriate report you wish to run.

